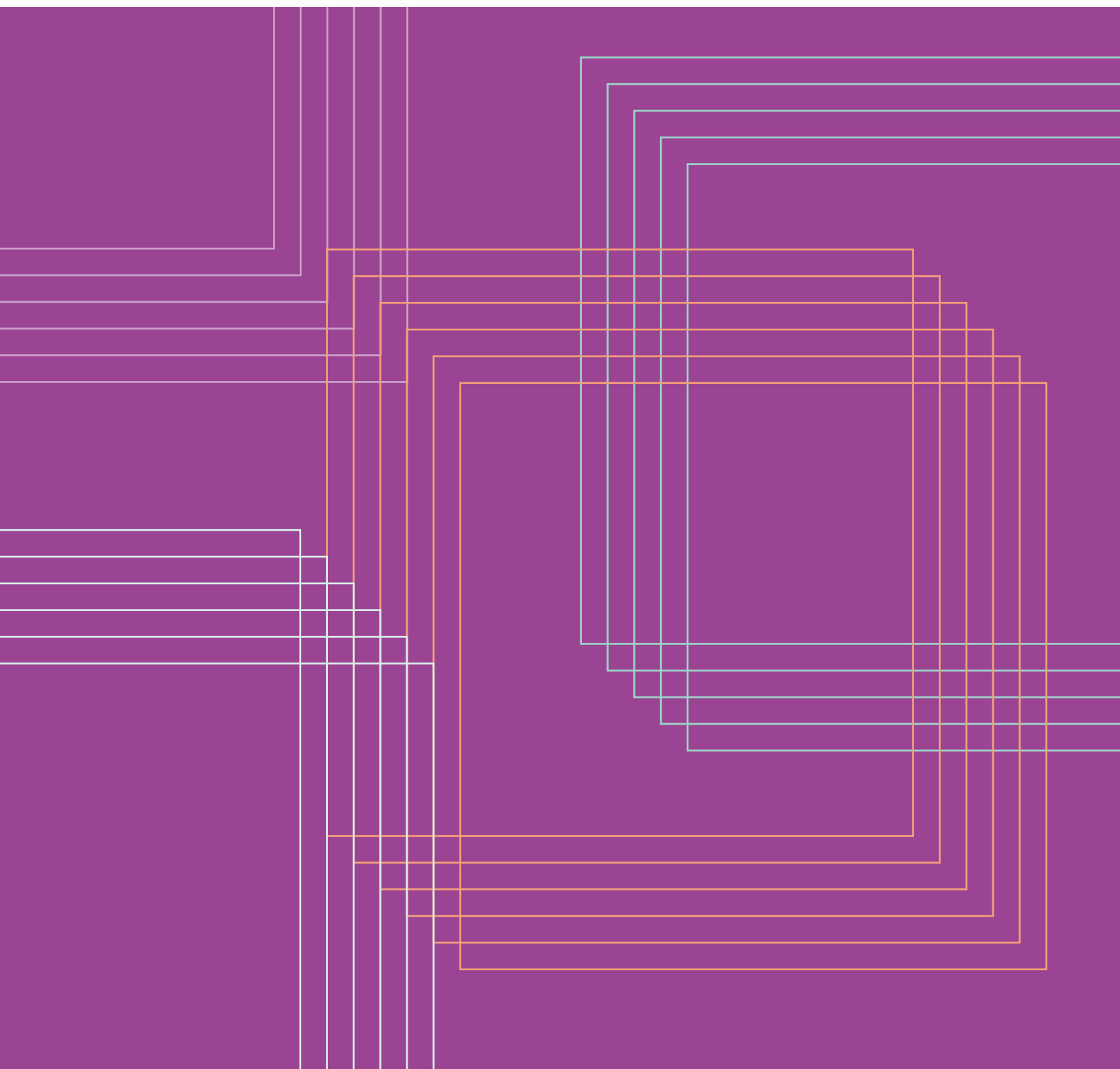




Annual and Financial Report **2024|2025**



Contents

Introduction

by Jon Lake, Chair of Community Pharmacy Essex 3

Opening

by Karen Samuel-Smith – Chief Officer of Community Pharmacy Essex 4

Key activities during the year 6

Words from Evan Scheepers, Relationship & Engagement Officer and Eddie Brown, Business Intelligence Lead 6

2024-2025 Commissioned Services

- Essex County Council 8
 - Southend-on-Sea City Council 10
 - Thurrock Council 11
-

Advanced Services 11

Market Entry Data 13

Annual Conference and Annual General Meeting (AGM) – October 2024 14

Other meetings, forums and events during the year 15

Annual Financial Report 2023-2024 16

Committee Members

- Meeting attendance 17
 - Declaration of Interest 18
-

Contact Us 20

■ Introduction



by **Jon Lake**,
Chair of Community Pharmacy Essex

It is my pleasure to present the Community Pharmacy Essex Annual Report for 2024/2025.

This year has been one of both challenge and transformation for community pharmacy across Essex. As Chair, I have witnessed first-hand the incredible resilience, professionalism, and adaptability shown by pharmacy teams as they continue to deliver vital health services at the heart of our communities.

In the face of evolving NHS priorities, increased demand, and continued pressures on funding and workforce, our sector has stepped up with innovation, collaboration, and a renewed commitment to patient care. From the expansion of the Pharmacy First service to enhanced engagement in public health initiatives, community pharmacy is being recognised not only as a key part of the wider healthcare system, but also as a trusted and accessible front door to the NHS.

This report highlights the progress we've made, the partnerships we've built, and the advocacy efforts we've pursued to ensure our voice is heard at both local and national levels. It also reflects our strategic priorities - supporting contractors, strengthening our representation, and helping the sector to thrive in a rapidly changing environment.

On behalf of the Committee, I thank all our pharmacy teams, stakeholders, and partners for their continued dedication and support. We look forward to working with you all in the year ahead as we continue to shape the future of community pharmacy in Essex.

■ Welcome to the Community Pharmacy Essex annual report for 2024|2025



Karen Samuel-Smith

Chief Officer of Community Pharmacy Essex

This was the year of no contract, as the 5 year funding arrangement which commenced in 2019 had run its course, and so was rolled over into a 6th year. This was in no small part due to the general election and change in government in July 2024, and subsequent time to allow new ministers to settle into their role.

There are early signs that the financial and other pressures that the sector is working under are being recognised, however at best any optimism needs to be cautious as the economy is not, at the start of this government, in a strong position.

Of course the national contractual framework is for our colleagues at Community Pharmacy England to negotiate: Our role in Community Pharmacy Essex is to support Essex contractors to optimise their income from that framework, and to work with local stakeholders to develop local income streams alongside the national contract.

In order that we can do that effectively we reviewed the office workforce, and recruited two new team members: Evan Scheepers who is our relationship and engagement officer, charged with developing our communications and social media presence, engaging with the public and with patient groups and ensuring community pharmacy is well represented in ICB and local authority communications, and Eddie Brown, our Business Intelligence lead, who is helping us to navigate and make sense of the extensive and diverse data that is available to help us support contractors, develop business cases and sell services to other stakeholders. They have both settled well into the team, and it has been a learning process for us all as we have to re-think all the jargon that we have fallen into the habit of using.

The office continues to be managed efficiently, effectively and cheerfully by Angela Culleton, without whom none of this would be possible. Her level of commitment to you can be measured in the numbers of cups of tea that go cold on her desk while she is beavering away at something, and if she didn't insist on putting the Christmas decorations up too early every year she would be perfect.

We have also further strengthened our governance arrangements with Healthy Living Partnership Ltd, our provider company, and the arrangements now comply with the Community Pharmacy England recommendations. This puts us in a strong position for negotiating services with both NHS and local authority organisations as we can hold a single contract with them. We strongly recommend that you read the Healthy Living Partnership annual report in conjunction with this report.

As a result of this work we have seen some positive results for contractors.

- Those in the Essex County Council footprint can join a Healthy Living Pharmacy Level 2/3 programme which is working to integrate NHS advanced services with locally-commissioned services, and pays the pharmacy Health Champions for their time to support this. The data is showing much greater levels of service activity, and therefore

income, from pharmacies in the programme.

- We have worked with Mid and South Essex ICB to secure funding for community pharmacy leads for each of the emerging Integrated Neighbourhood Teams, ensuring community pharmacy is at the table from the start of this new way of working.
- Mid and South Essex and (Suffolk and) North East Essex were selected to be pilot sites for the RSV vaccine programme, in part as a reflection of the earlier innovative vaccine work that we had done to support the HPV for men who have sex with men programme and the Mpox campaign.
- We are also looking forward to what community will look like in the future, participating in stakeholder boards for both the University of Suffolk and Anglia Ruskin University Schools of Pharmacy to ensure we can grow a future workforce that is fit for purpose. We are encouraging NHS Workforce, Training and Education to recognise innovations in pharmacy robotics and intelligent PMRs within workforce planning and development.
- Working with contractors and Community Pharmacy England we have seen good engagement with MPs over the year, including a PMQ following a visit to a pharmacy by the MP for Chelmsford, MP visits to pharmacies in Braintree and Witham and a successful MP drop-in in Westminster attended by over 50 MPs and their staff, including several new MPs.

We are not, however, ignorant to the reality that a lot of contractors are facing after six years of under-investment, both in the sector itself and the infrastructure to support it. Although the rate of closures has slowed down markedly we know there are businesses that are really struggling, and pressures on the rest of primary care means relationships with practice staff and GPs can be strained, adding to a stressful working environment. We do encourage you to attend our forum meetings when you can, as an opportunity to let off steam with others who are going through the same thing, but please seek professional help or contact pharmacist support <https://pharmacistsupport.org> if you are concerned about the impact of stress on your work or health.

Stress can be exacerbated if you are subject to complaints, contract or performance-related processes, especially in response to an incident or near miss: We can assist you through these, including attending monitoring visits, helping you prepare responses, practice runs etc, however this depends on you letting us know, and the sooner you let us know the better.

We enter the 2025/2026 contractual year with a new funding settlement and a lot of work to do. Whatever your views on the settlement our job is to make it as easy as possible for Essex contractors to optimise their income from it. Your committee members have all been allocated specific elements of the new framework to lead and direct the office on, and we welcome their enthusiasm and scrutiny throughout the year.

We will also be seeing changes to the NHS landscape again, with a Greater Essex ICB likely before the end of 2025. As an organisation we have the advantage that we already have a footprint to match this, and can approach the new organisation as a mature and trusted partner.

We look forward to the opportunities this may offer, and to taking you with us on the journey.



Evan Scheepers
Relationship & Engagement Officer

A Year of Fabulous Outreach and Promoting Pharmacy Firsts,
Promoting Services

Hello everyone, I'm Evan-Leigh Scheepers the Relationship and Engagement Officer for Community Pharmacy Essex, playing a pivotal role in promoting strong relationships between pharmacies, stakeholders and our residents while promoting the valuable services our community pharmacies provide.

I began this role in September of 2024 and it's been a whirlwind of activity in a short space of time. From promoting pharmacy to health colleagues at the CanDoExpo 2024 all the way to getting aboard the vaccination bus shouting and promoting Pharmacy First to anyone who'd listen (and quite a few who wouldn't)!

And then there was my week on the vaccination bus with Mid and South Essex! Talk about a crash course in community engagement! Each day, I teamed up with one of our fantastic community pharmacy contractors. Branded "Encouragement Officer" which involved a lot of enthusiastic waving, grabbing arms (gently!), and generally persuading the good people of Essex that a quick jab was exactly what their day needed.

Alongside offering the COVID-19 and Flu vaccinations, we were also shouting about Pharmacy First and RSV vaccinations, handing out leaflets like they were going out of style. I'd like to think I converted at least a few uncertain residents about the Pharmacy First service and RSV vaccinations.

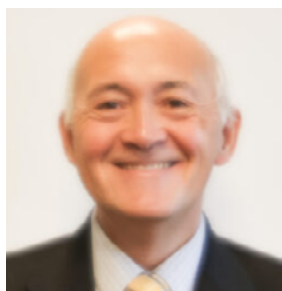
As part of our ongoing work to enhance communication and engagement, I've established a social media page's, and I will continue to produce and distribute our monthly newsletters with the aim to;

- **Increase Public Awareness:** Raise awareness of the accessibility, expertise, and comprehensive services available at community pharmacies in Essex.
- **Support Your Work:** To support your work by driving footfall, promoting service uptake, and reinforcing the crucial role of community pharmacy
- **Important Updates:** Key news, policy changes, and developments relevant to community pharmacy.
- **Upcoming Events:** Training opportunities, meetings, and other important dates for your calendar.

I encourage you to engage with our social media pages and continue to read the newsletter for the latest updates.

From community events to vaccination buses, I've been, forging connections, and generally being the friendly face of pharmacy. I am looking forward to another year of visiting community pharmacy contractors, even greater engagement, even stronger

relationships, and even more people saying, “Wow, I didn’t know my pharmacy could do that!”



Eddie Brown
Business Intelligence Lead

The role of a Business Intelligence analyst seems to vary greatly with every employer that I have worked for. Some want a person who just manages data, some want a person who can do graphs and charts, some want an expert in statistical analysis and so on. The reality is usually all of these and more!

The beginning is the decision that the company needs to make better use of the data that it has.

The next step is to work out what data you have and of that, what is actually useful and actionable.

Alongside this, is understanding the stories that you want to tell with this information and how to show this.

This is the BI journey we have started at Community Pharmacy Essex.

I joined in August 2024 and immediately started looking at what data we had available and understanding how the organisation worked alongside pharmacies to help them in their day to day business.

Both aspects have given me new challenges to meet.

The data available to CPExs is quite sparse and generally limited to that which is publicly available from the likes of the NHS Business Services Authority (NHSBSA). Although serving pharmacies, we are viewed as outside of the NHS and not patient facing. This means that the information that details patient level activity is either not available or summarised. This includes information around GP activity and hospital discharges. The data from NHSBSA only includes paid for activity, so if there has been activity at a pharmacy but it’s not claimed for, it will not be visible to us.

On the business side, I have been learning what roles Community Pharmacy Essex plays and how that relates to the wider community as well as the interactions with the various commissioning bodies. I have visited a number of pharmacies and found out a little about how they function and the day to day business challenges. I have been learning how the committee functions, what PCN leads do.

Back “in the office”, I have been working out how to convert all of this information – business knowledge and data, into a tangible format.

This started with building various database platforms to see what would give us best value for money. We have worked through Excel, MS Access, the odd cloud platform but at present, I believe that a database platform called SQL Server and a reporting platform called PowerBI would serve us best.

I have built methods to take the data from the various sources on a monthly basis and load them into the database where it gets linked to various lookup tables so that the

reports can filter the results in many ways – by ICB, by PCN, by pharmacy, year and so on.

The Graphs in the Annual Report this year are an example of how we can use the data from this new platform.

We are still in the early stages of the BI journey and I am always looking to see how information will help us improve or grow and trying to get access to more and better sources of information.

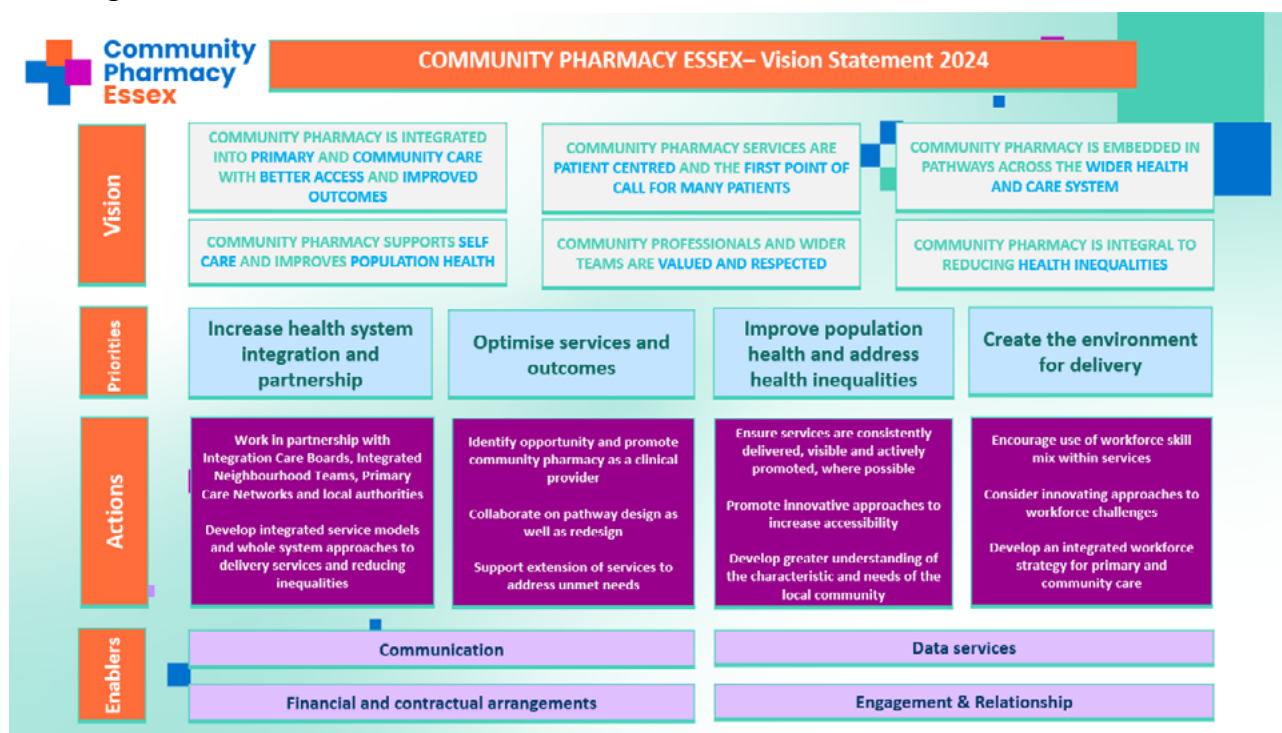
If you would like to learn more about BI or want to discuss potential reporting, please do get in touch with me. The only caveat is that it needs to be in line with Community Pharmacy Essex business!

■ Key Activities during the Year

Busy start to the year with Pharmacy Forum Meetings taking place in Mid and South West Essex and West Essex taking place in May

■ Community Pharmacy Essex – Vision Statement 2024

Then, Karen Samuel-Smith, Angela Culleton, Jon Lake, Ashok Pattani and Mo Raje locked themselves away for a day to create a Community Pharmacy Essex Strategy so that the Committee Members could see whether it was feasible to use and practical to be embedded in our ways of working with Contractors. Thankfully at the meeting in May it was accepted and we are striving to work with the strategy in our everyday ways of working.



Thanks to Ani Patel, Chair of Healthy Living Partnership Limited for also being involved with part of the day and adding his contributions, great to have transparency with our Provider Company.

■ World of Technology

To keep up with the word of technically, Angela Culleton attended an event, Digital Training hosted by Community Pharmacy England in May. It was interesting to see how various networks can be used to promote and engage with target audience, and the impact they have. Even better, now Evan has joined the team he is steaming away with our socials and has a real understanding of them. If you are not already, please follow Community Pharmacy on Facebook and LinkedIn

<https://www.facebook.com/people/Community-Pharmacy-Essex/61567691124428>

<https://www.linkedin.com/company/community-pharmacy-essex/?viewAsMember=true>

and of course, not forgetting, please take some time out to check the content on our website www.cpesx.org.uk

■ Contractor forum meetings

A full month of pharmacy meetings in June, literally covering every locality in Essex

- South East Essex Forum Meeting (19th June)
- North East Essex Forum Meeting (20th June)
- South West Essex Forum Meeting (24th June)
- Mid Essex Forum Meeting (27th June)

■ Office Team Recruitment

During the summer months, the Office was keen to recruit a Data Analyst and Engagement & Relationship Officer to join the team, and after successful rounds of interviews we were pleased to welcome Eddie Brown and Evan Scheepers to compliment to team.

■ Annual General Meeting

This year we held the Annual General Meeting virtually via Teams during the evening of 26th September and we were so pleased to see so many Contractors attend and to gain approval of the annual report, financial report, adopting the new constitution and managing the reserves. It was felt that as so many attended, it will be held in the same format in 2025-26.

■ Vaccination bus in Basildon, Canvey, Thurrock



Mid and South Essex Integrated Care Board (ICB) set about organising a vaccination bus to stop at four locations in the Essex area to provide healthcare tips and advice for this upcoming winter. It was proposed by Essex LPC to have a vaccinator onboard to increase vaccine uptake. This initiative allowed 222 members of public to be vaccinated directly from the bus, an impressive uptake and significantly contributing to community

health and well-being. One of the vaccinated individuals shared their experience: **[“The mobile unit made it so convenient for me to get vaccinated. Thank you for bringing this service to our community!”](#)**. By bringing a pharmacist directly to the community, we’ve been able to provide eligible residents with both the COVID-19 booster and the flu

job. The collaboration between the MSE ICB and Community Pharmacy Essex has truly demonstrated the power of community-focused healthcare.

■ Community Pharmacy parliamentary drop-in event

January 2025 also saw an increase presence and interest of Members of Parliament (MP) visits to pharmacies in Essex - Dipak Pau at The Pillbox, Great Baddow and Baba at Akomolafe at Christchurch Pharmacy, Braintree

Community Pharmacy England then met with 50 MPs and parliamentary staff at the Houses of Parliament on Tuesday 11th March to discuss the vital healthcare role that pharmacies play in local communities and how the critical pressures on community pharmacies are putting this at risk.

During the busy Westminster event MPs were asked to support the call to protect community pharmacies after learning about the sector's financial crisis, including the ongoing pharmacy closures, and the impact that pharmacies are having locally



The event was supported by pharmacy owners and LPC representatives including Dipak Pau from Pillbox Pharmacy in Chelmsford, and Karen Samuel-Smith from Community Pharmacy Essex. A particular focus was on medicines shortages and concessions, barriers to service delivery such as referral requirements, and the impact of additional costs such as NI and minimum wage increases that cannot be passed on to customers. There were also a few technical questions regarding Pharmaceutical Needs Assessments.

The team talked to MPs about what needs to be done to stabilise community pharmacy and how to better utilise the untapped clinical potential of the sector. All MP attendees were provided with personalised briefings containing data on the prescriptions dispensed, services delivered, and pharmacy closures in their constituencies.

■ 2024 – 2025 Commissioned Services

Services	Local authority		
	Essex County Council	Southend On Sea City Council	Thurrock Council
Stop Smoking	Healthy Living Partnership contracted by Provide	Everyone Health	
Sexual Health	Healthy Living Partnership contracted by Provide	Healthy Living Partnership contracted by Southend on Sea City Council	
Substance misuse/ NSP	Essex STARS for Supervised Consumption Open road for Needle Exchange.	Forward Trust	Forward Trust
NHS Healthchecks	Healthy Living Partnership contracted by Provide	Not currently commissioned	Not currently commissioned

■ Advanced Services

Pharmacies who have registered on the Manage Your Service (MYS) portal to indicate they will be providing the NHS Community Pharmacy Hypertension Case-Finding Advanced Service, Pharmacy First Service, Pharmacy Contraception Service, Lateral Flow Device Service and Smoking Cessation Service.

Essex has 302 community pharmacies,

- Pharmacy First Service 292 sign ups
- Hypertension Case Finding Service 282 sign ups
- Contraception Service 242 sign ups
- Lateral Flow Service 227 sign ups
- Smoking Cessation Service 138 sign ups

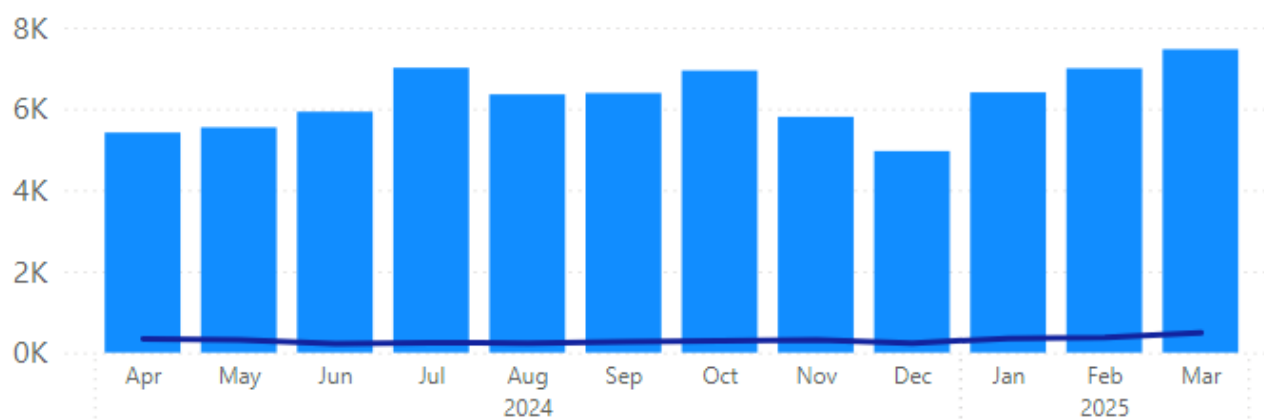
Data as at 24th March 2025

The chart below shows all Pharmacy First consultations in Essex community pharmacies during April 2024 to March 2025 under each of the 7 conditions, as well as minor illness referrals and urgent medicines supply interventions.

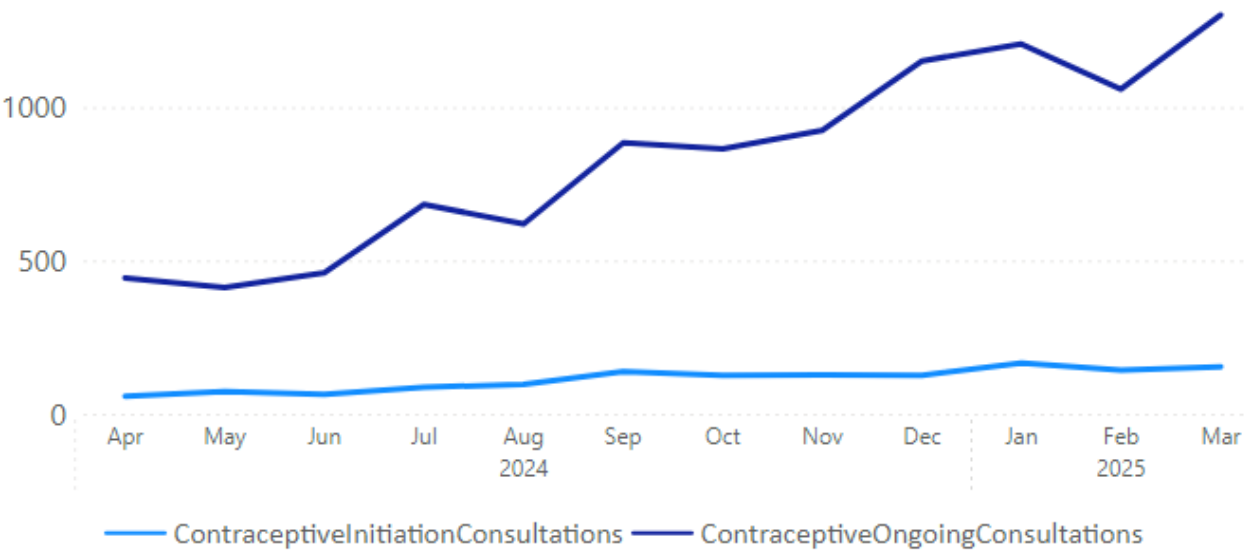
Pharmacy First Service

Year	2024							2025				
	Apr	May	Jun	Jul	Aug	Sep	Oct	Nov	Dec	Jan	Feb	Mar
AcuteSoreThroat	2078	1978	1666	2114	1352	1564	2009	2335	3362	2945	3097	3601
AcuteOtitisMedia	865	858	588	844	890	622	862	1182	1646	1144	1361	1354
Impetigo	189	146	178	195	186	246	292	304	252	255	252	295
InfectedInsectBites	212	780	853	1303	1727	991	466	254	150	120	138	191
Shingles	147	160	168	188	179	150	163	196	198	156	185	197
Sinusitis	786	609	502	543	352	495	773	939	1374	1374	1341	1377
MinorIllnessReferralConsultations	3570	3528	3403	3840	3123	3397	3647	3622	4059	3739	3279	4066
UrgentMedicineSupplyConsultations	2416	2857	2432	3202	3384	3001	3059	3013	3519	2766	2766	3124
UncomplicatedUTI	1263	1182	1191	1512	1593	1613	1804	1751	1923	1737	1598	1740

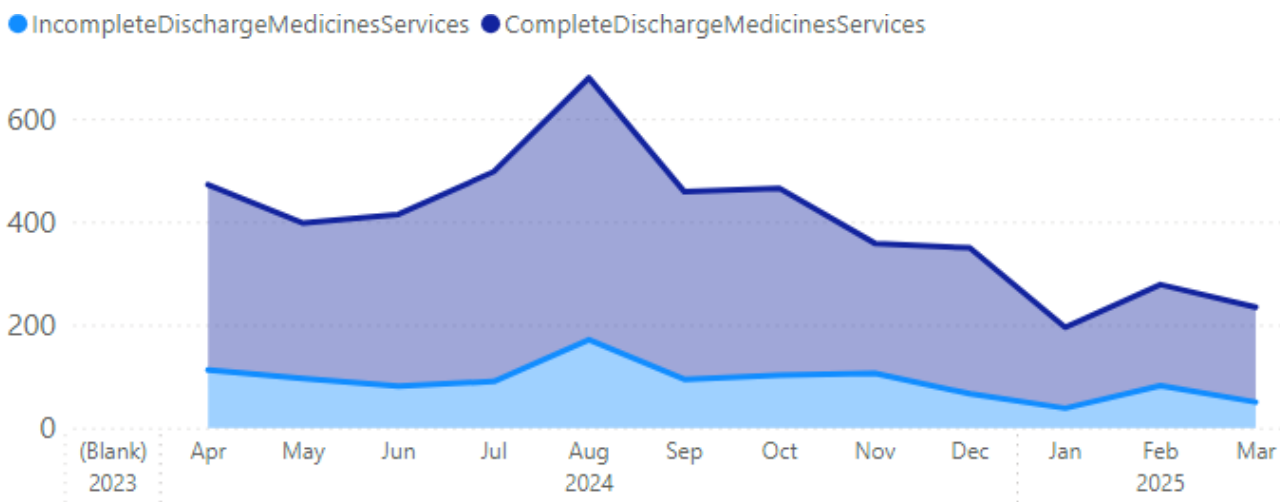
Clinic Blood Pressure Checks and Ambulatory Blood Pressure Monitoring



Community Pharmacy Contraceptive Consultations



Discharge Medicines Service



■ Market Entry Data

Pharmacy Applications between April 2024 to March 2025

7 applications were received during the year

- 1 no significant change, approved
- 2 unforeseen benefits,
- 1 inclusion to the list
- 1 relocation
- 1 best estimate

Other than the no significant change application the others are still waiting for determination

One application was received from outside Essex, for outline consent and premises approval however it may have an impact on pharmacies within the Essex border.

Pharmacy contract changes between April 2024 to March 2025

28 changes of ownerships, of which 7 have taken place

1 pharmacy has closed, and another one has given notice to close during next financial year

43 pharmacies have changed their hours

- 2 change to core hours
- 41 change to supplementary hours

■ Annual General Meeting

Annual General Meeting held on Thursday 26th September 2024 via Teams

In attendance

Jon Lake Chair
Essex Contractors
Ashok Pattani (Finance Manager)

Introduction

As the meeting was taking place virtually all the committee members and office staff introduced themselves to the Essex Contractors who were attending

Community Pharmacy Essex Annual Report

Jon Lake summarised a few key points in the Annual report as well as thanking committee members, Karen Samuel-Smith and Angela Culleton in the Office (engine room!) and Mo Raje and Frank McLaughlan in their role as Field Officers.

Jon Lake explained the Community Pharmacy Essex Annual Report and Accounts for 2023-2024 had already been posted and emailed to all pharmacies in Essex.

Proposed by Mo Raje and seconded by Tunde Sokoya and it was therefore formally approved unanimously.

The annual report will also be added to the website.

Essex LPC Finance Report

Ashok explained the accounts, no queries were raised with the content of the Financial Report 2023-2024. The Office had received 83 postal votes approving the accounts,

Tunde Sokoya proposed the accounts, and Mo Raje seconded and it was therefore formally approved unanimously.

Proposal to adopt the new constitution

Details and links to the model constitution and rules were sent with notice of AGM and voting papers by post and email on 21st August 2024. Karen Samuel-Smith briefly explained that the model constitution differs from that on Community Pharmacy England in that:

- References to Association of Independent Multiple Pharmacies/AIMP have been changed to Independent Pharmacy Association/IPA
- The transitional clauses in the constitution have been removed.

These amendments have been approved by James Wood, Director of Member and LPC Support at Community Pharmacy England.

Proposed by Mo Raje and seconded by Sarah Read and it was therefore formally approved unanimously.

Managing the Reserves

There is slightly more in the current reserves than recommended by Community Pharmacy England.

There are several reasons for this, including a gap in recruiting staff, but also an increase in levy income from service delivery.

Following last year's AGM we followed your guidance and invested in Pharmacy First training, rather than a levy holiday.

Approximately 230 pharmacists, including employees and locums, attended the Pharmacy First training days which included ENT examination, oral contraception and service preparedness.

Contractors were then presented with the following options to consider

- a) We do nothing and reserves continue to exceed recommended levels
- b) We agree a 1-month levy "holiday" worth an average £125 per contract.
- c) We invest in further training and development for pharmacy teams to support local implementation of nationally-commissioned services.
- d) We agree a 1-month levy holiday AND invest in further training and development

Discussions took place between contractors and their expectations and hopes for various training; Pharmacy First, Primary Care Network leads, training and development for the workforce. It was pointed out that Independent Prescribing training could not be supported by LPCs as this professional development.

Mo Raje proposed option C and received 8 votes, however Kevin Western proposed Option D with 9 votes. Therefore contractors will receive a levy holiday in October 2024 and work with commence of training and development needs immediately.

■ Annual Conference

Sunday 27th October 2024 at Ivy Hill, Margarettown, Essex

Community Pharmacy Essex Conference focused on some practical elements for Contractors.

- Supervised Consumption and Needle Exchange service: Essex STARS, Open Road
- Vaccination training, including technician training
- Lifestyles training, Stop Smoking update including Non-NRT support
- Essex Controlled Drug “Mini-LIN”: Regional Controlled Drug Accountable Officer sharing current trends and issues in the safe management of controlled drugs

Gratitude to Chief Executive, Tom Abell attending as our keynote speaker, he discussed Mid and South Essex Integrating Pharmacy Services, Darzi review and quick wins in the new 10 year NHS plan.

Contractors also had the opportunity to network and wonder around the trade fair, as always Community Pharmacy Essex is thankful for the Pharma Companies that continue to support our events. Nearly 100 attended the event.



■ Contractor Development Event

Sunday 9th February 2025 at Ivy Hill, Margareting, Essex

In our usual fashion we hold an annual development event for Essex Community Pharmacy teams, and was really pleased to see over 70 attending this year.

■ MSD “Principles of vaccination and vaccine programmes”

This workshop targeted those new to vaccinating patients, such as foundation pharmacists and registered technicians, for those who have previously vaccinated under the national protocols who want a better understanding of vaccine development, and anyone who wants to be better informed about vaccine hesitancy.

■ Pharmacy Regulations presented by General Pharmaceutical Council

An opportunity to understand the pharmacy inspection and regulation process from the regulator, to hear about current trends and patterns in successful- and unsuccessful- pharmacy inspections.

■ Mental Health/First Aid – Provide

A very popular session, that had a high demand for. Practical and an interactive session that received very positive feedback from.

■ The return of Varenicline and the new PGD

Update on using Varenicline as an option to help smokers in Essex to quit. Refresher on the new Essex stop smoking service

■ Claiming what you are entitled to: Ensuring MYS claims are accurate (Liam Stapleton, Metaphor Development)

With numerous services being claimed through MYS, and the imminent bundling of some advanced services, it can be easy to miss MYS errors and lose out on funding. Liam virtually presented and built on previous webinars on prescription endorsement and understanding your FP34 statement.



■ Annual Financial Report 2023 – 2024

Income and Expenditure Statement for the Year Ended 31 March 2025

	Notes	2025 £	2024 £
Income		335,202	358,542
Administrative expenses		(358,341)	(343,322)
Other operating income		<u>12,420</u>	<u>12,204</u>
Operating (deficit)/surplus		(10,719)	27,424
Interest receivable and similar income		9,132	4,572
(Deficit)/surplus before taxation		(1,587)	31,996
Tax on (deficit)/surplus		<u>(1,735)</u>	<u>(869)</u>
(Deficit)/surplus for the financial year		<u>(3,322)</u>	<u>31,127</u>

The income and expenditure account has been prepared on the basis that all operations are continuing operations.

Balance Sheet 31 March 2025

	Notes	2025 £	2024 £
Fixed Assets			
Tangible assets	5	71,253	74,490
Current Assets			
Debtors	6	29,922	29,796
Cash at bank and in hand		<u>259,714</u>	<u>254,655</u>
		289,636	284,451
Creditors: amounts falling due within one year	7	<u>(12,271)</u>	<u>(7,001)</u>
Net current assets		<u>277,365</u>	<u>277,450</u>
Net assets		<u>348,618</u>	<u>351,940</u>
Reserves			
Business Development Fund (2015)		96,757	96,757
Accumulated surplus on income and expenditure account		<u>251,861</u>	<u>255,183</u>
Total members' funds		<u>348,618</u>	<u>351,940</u>

The financial statements were approved by the committee members and authorised for issue on 19th June 2025 and are signed on its behalf by Mr A Pattani, Finance Manager.

Committee Members

Meeting attendance

There have been 5 committee meetings that have taken place during the year. Copies of the Minutes can be found <https://cpesx.org.uk/lpc-committee-area/committee-minutes/> 4 of the meetings were face to face and the September meeting was virtual.

Name	Contact e-mails	Attendance Record
Onome Sankey	onome.sankey@nhs.net	5/5
Jon Lake	chair@cpesx.org.uk	4/5
Sarah Read	sarahread.savages@gmail.com	3 and part of a meeting
Mo Raje	mo@cpesx.org.uk	4 and part of a meeting
Husain Master	husain.master@nhs.net	4 and part of a meeting
Kevin Western	kevin.western@nhs.net	5/5
Ivy Tuffour	ivy@tuffourgroupp.com	3/5
Babatunde Sokoya	sokoyaat94@gmail.com	4/5
Christine Stafford	christine.stafford@boots.co.uk	5/5

Really pleased to welcome Kirsty Harper (Well Pharmacy) who joined the committee on 11th November 2024

We bid farewell to Sanjay Patel who left the committee on 14th May 2024 and Zhya Said who left 25th September 2024

Hema Patel attends Community Pharmacy Essex committee meeting in her capacity as a Director representing Healthy Living Partnership Limited.

Anil Sharma is the Community Pharmacy England (CPE) Regional Representative, he is invited to the committee meetings to offer clarity and explanation around some of the decisions that are made as well as taking onboard feedback and comments received by Essex Contractors and committee members.



Declaration of Interests

Name	Declared Interest (Name of the Organisation and nature of business)	Type of Interest (see guidance notes below – please mark 'X')			Is the interest direct or indirect? (see guidance notes below)	Nature of Interest	Date of Interest	
		Financial Interest	Non-Financial Interest	Non-Professional Interest			From	To (Insert end date if interest will be time limited.)
Jon Lake	Boots UK – Pharmacy	X			Direct	Service commissioning	1.4.2023	
Ivy Tuffour	Tuffour Pharmacy Group VYCO Limited	X			Direct	HR Director		Present
Kevin Western	Day Lewis	X			Direct	I am an Employee so “potential”	1994	Present
Husain Master	Essex Pharmacy	X	X	X	Direct	Owner	June 2020	
Babatunde Sokoya	TSGK Enterprises Ltd Herts & West Essex ICB	X			Director Employee	Director	1.12.2005	
Onome Sankey	Nil					Board Member	1.10.2024	
Sarah Read	S R Pharm (Locum Pharmacist)	X			Direct	Owner	Dec 2024	Ongoing
	Dips Chemist, RM16 4QR (NHS Contractor)	X			Direct	Provider of locum RP services	Jan 2025	Ongoing
	Savages Pharmacy, CM0 8BQ (NHS Contractor)	X			Direct	Provider of locum RP services and clinical governance/admin assistance	May 2019	Ongoing
Mo Rajee	Abridge Surgery Essex Locums	X			Direct	Clinical Pharm CEO	2021 2022	

	PCN Direct Locum Pharmacist for CCA, AIM and independents Find my DPP HWICB	X X X X					Director Comm Pharm Director Consultant	2023 2012 2024 2024	
Christine Stafford	Boots	X	X			direct	Procurement of locally commissioned services	05.07.2024	
Kirsty Harper	Nil								
Hema Jetha	Sheevnali Ltd	X	X	X		Direct & Indirect	Pharmacy Business	1.3.2017	
Karen Samuel-Smith	Partner is safeguarding lead for Healthy Living Partnership Ltd			X		Indirect	Provides advice and writes policies for HLP Ltd (remunerated)	October 2022	
Karen Samuel-Smith	ModernaTX	X				direct	Clinical trial participant (expenses paid)	October 2023	May 2024
Ashok Pattani	Community Pharmacy Essex Healthy Living Partnership Ltd	X X				Honorarium & attendance payment Honorarium payment	Finance Manager Finance Manager	2011 2023	
Angela Culleton	Nil								
Eddie Brown	Crompton Pharmacy MDxHealth	x				Indirect direct	Wife works as a Dispenser here shareholder	14/08/2024 14/08/2024	
Evan Scheepers	Nil								

■ Contact Us

General queries can be e-mailed to office@cpesx.org.uk or essex.lpc@nhs.net

Karen Samuel-Smith (Chief Officer) karen@cpesx.org.uk 07900 218444

Angela Culleton (Office Manager) angela@cpesx.org.uk 07566 798980

(Monday to Thursday 9am to 4pm)

Evan-Leigh Scheepers (Relations and Engagement Office) evan@cpesx.org.uk 07729095240

Eddie Brown (Business Intelligence Lead) eddie@cpesx.org.uk 07729095241

Lisa Lovell (Lifestyle Services Lead) lisa@cpesx.org.uk 0740 265 5556

Community Pharmacy Essex Tel: 01245 460079

Address 17 Clematis Tye, Springfield, Chelmsford, Essex, CM1 6GL

✕ @CommPharmEssex  Community Pharmacy Essex  Community Pharmacy Essex

www.CPEsx.org.uk

