

ANNUAL REPORT & FINANCIAL STATEMENT

2017 - 2018

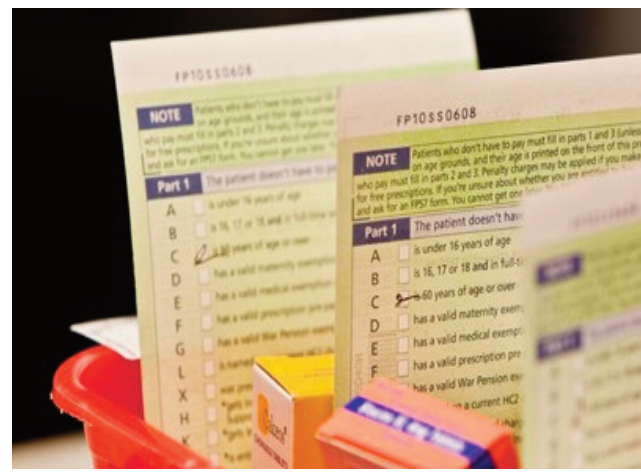


Table of Contents

| | |
|---|-------|
| Introduction by Essex LPC Chair, Simon Moul | 3-4 |
| Chief Executive's Report | 5-6 |
| Contractor Development Manager Report | 7 |
| 2017/18 Commissioned Services | 8-11 |
| Events Arranged for Contractors | 12-13 |
| Quality Payment Scheme | 14 |
| Annual Financial Report 2017/18 | 15-17 |
| Pharmacy Applications | 18 |
| MUR and NMS Data | 19 |
| Committee Members Meeting Attendance Record | 20 |
| Declaration of Interests Summary July 2017 | 21 |
| LPC Members Contact Details 2017/18 | 22 |

CHAIRMAN'S REPORT



Every year the expectations of Community Pharmacy increase and Essex LPC has over this past year as previously attempted to support all Essex contractors in raising the bar and offering the best possible service to our population.

My role as Chair of the Committee has been to ensure all areas and types of pharmacy have been able to receive support when required and ensure all communications from Central and local bodies are received at grass-roots.

Essex LPC has through our provider Company Healthy Living Partnerships managed to direct and manage a range of services such as Smoking Cessation and Sexual Health. This experience can only help us develop further services also cushioning some of the blow of from the loss of income from the core dispensing income.

Every year it becomes even more important Community Pharmacies look to maximise their return not only from dispensing NHS prescriptions but look at other income streams by providing other available commissioned services

As Chair, I have kept the team focussed and provide guidance and strategic direction for the Officers to engage effectively with commissioners and contractors; and ensured community pharmacy is integrated into local health delivery plans.

Communication of the work of Community Pharmacy to the people of Essex is vital and we have had opportunities to appear on BBC Look East and BBC Essex to further this idea.

We have looked to focus the educational aspects of our well attended pharmacy forum meetings working with the Contractors and being supported by teams from colleagues across the Pharmaceutical Industry and other Health Professionals to develop clinical expertise and other potential roles for Community Pharmacy going forward. Recent forums have given us an opportunity to meet with a range of agencies and bring all types of pharmacist & technicians including CCG Practice Pharmacists into the forums.

Essex LPC maintains a high profile on many national and local committees, to ensure the voice of Essex pharmacy and the views of grass-roots Essex contractors are represented at the highest level.

We have also had the opportunity to work with local patient groups and attend meetings raising the profile of the work of the pharmacies which is something all pharmacists should look to do close their localities.

It is also pleasing to note that the volume of other advanced services delivered by Essex contractors has risen again this year: this is important as it not only adds value to patient care and brings additional service-based income to the pharmacy, but critically it also demonstrates that community pharmacies are providers of high quality clinical services.

We urge Essex Pharmacy contractors to continue to deliver high quality MURs and NMSs. More commissioners are looking to these services as a way of optimising outcomes for their patients, and they can provide an effective tool in building relationships with other healthcare professionals.

CHAIRMAN'S REPORT

The Quality Payment Scheme gives everyone a chance to demonstrate how they can make a difference to the lives of those who use their service and at the same time help future proof the profession of Community Pharmacy.

Going forward, Essex LPC will strive to get the best deal for contractors with regard to commissioned services, and to challenge commissioning and prescribing initiatives that impact negatively on community pharmacy.

We anticipate a number of new services coming on stream in the next 12 months, but this will require a good use of skill mix, training and development and the establishment of robust processes to ensure consistency and quality of delivery is maintained. We cannot always rely on NHS funding streams and your committee is always looking to forge partnerships with other organisations in addition to the traditional NHS Primary Care route.

The LPC will do all in its powers to support and develop contractors through these challenging times.



Simon Moul
Chairman
Essex LPC

CHIEF EXECUTIVE'S REPORT



This has been the last year of the current committee. It has been a really challenging term for the committee, both in terms of the developments in the world of pharmacy and with various health issues with the office staff.

This year has been very sad as the Office manager Elaine Dove-Dixon, who many of you will have spoken to, finally lost her battle to cancer and we had to say goodbye to her in May. She will be dearly missed by all contractors and stakeholders across Essex.

The NHS has continued to evolve and is still undergoing a reorganisation. We have seen Sustainable Transformation Partnerships (STP) start taking a much more active role in the development of Healthcare. The NHS has decided to dissect Essex, so we now have to engage with three STPs across the county; West Essex and Hertfordshire STP, North East Essex and Suffolk STP and South and Mid Essex STP. Each of the STPs are at different stages of maturity and have different ways of engaging with community pharmacy.

One of the most productive initiatives through the STPs has been the development of the Electronic Medicines Optimisation Programme (EMOP), or transfer of discharge information from Hospital to community pharmacy to you and I. The introduction has been managed STP wide by the Academic Health Science Network (AHSN), who have put a lot of time and money into IT changes required at trusts, purchasing PharmOutcomes Licences and for holding pharmacy engagement events. Pharmacists have been asking to receive discharge information from hospitals for many years. This improves patient safety and also enables pharmacists to plan work and assess how they will engage with the patient. This project will go live in 2018/19 with Southend Hospital being first closely followed by Basildon University Partnership Trust.

Both the New Urgent Medicine Supply Advanced Service (NUMSAS) and the Quality Payment Scheme (QPS) have been extended by NHS England, although there is still no commitment to embedding them as core national advanced services. The QPS scheme has been well received by contractors and 311 met the gateway criteria and achieved most of the points available.

Pharmacists continue to demonstrate the added value they provide to the NHS by delivering 48,761 number of flu jabs in the 2017/18 season. This service has shown year on year improvements since it was introduced.

One of the most innovative service piloted this year was the supply of emergency packs for COPD patients across NE Essex. This service really highlighted the added value of pharmacists as early results showed pharmacists only dispensed steroids and antibiotics to patients that were clinically in need. A large percentage of patients were not given a rescue pack but received an MUR, NMS, flu jab or were referred to the Smoking Cessation service. It is anticipated that this service will be extended to more pharmacies and be commissioned for next winter.

Other services that the LPC has also piloted include a hypertension service and a Warfarin supply service both in Thurrock.

One of the biggest problems faced by contractors over the last twelve months continues to be shortages, sourcing medication and the associated NCSO. The LPC continues to raise this with the PSNC and with local MPs at every opportunity. I understand that this is causing a real problem for many contractors and so have been working with local NHS teams to try to find pragmatic solutions. The LPC will continue to raise concerns both nationally and locally.

CHIEF EXECUTIVE'S REPORT

At a national level the PSNC will formally appeal the Judicial Review in 18/19 and we are awaiting an outcome of the review at the time of writing. We have also seen the end of an era with Sue Sharpe CEO of the PSNC retiring and being replaced by Simon Dukes who arrived at the PSNC having previously been CEO of Cifas the UK Fraud Prevention Service. Most interesting for us is that he lives in Essex.

Finally I would like to thank the outgoing Committee members for all their hard work and enthusiasm for community pharmacy over the last four years. I welcome the new Committee and anticipate that you will rise to the challenges of the next four years.



Ash Pandya
Chief Executive
Essex LPC

CONTRACTOR DEVELOPMENT REPORT



One of the key constitutional functions of Essex LPC is support and guidance for pharmacy contractors. While this is the responsibility of the committee as a whole, much of the day-to-day operational work is carried out by the Contractor Development Manager.

This includes LPC Newsletters and email briefings, advising on contractual matters including Community Pharmacy Contractual Framework (CPAF), market entry consultations, complaints handling and incident recording and reporting.

We also provide support and advice to individual contractors on request: This does not constitute legal advice, and we will always state when we think legal advice should be sought, however we do have a good working knowledge of the relevant regulations which is updated regularly, and can often guide contractors towards successfully resolving particular challenges. This support is confidential, although contractors may be asked if valuable learning from a situation can be shared anonymously with the wider group.

In 2017/18 this workstream included

Visiting **35** different pharmacies to offer support to contractors.

Participating in the development of **3** Pharmaceutical Needs Assessments

Promoting community pharmacy at **4** patient reference group or Healthwatch presentations

Attending **4** Local Medical Committee (LMC) and/or Local Optometry Committee (LOC) meetings

Representing Essex and Anglia LPCs at **2** regional Patient Safety events

Participating in **3** national regulatory/market entry/appeals training events

All of which involved driving **6096** business miles.

A handwritten signature in black ink, appearing to read 'Karen Samuel-Smith'.

Karen Samuel-Smith
Contractor Development Manager – Essex LPC

COMMISSIONED SERVICES

NHS England Local Enhanced Services



Bank Holiday and Out of Hours Rota Service

Services continue to be commissioned by NHS England for the 'super' bank holidays, ie Christmas Day and Easter Sunday, other bank holidays have been adequately covered by voluntary opening.

The national Quality Payment Scheme (QPS) has included publicising bank holiday opening hours as one of the criteria, this has led to improved transparency and allows both other services and the public to identify which local pharmacies are open on bank holidays.



The Out of Hours rota in West Essex ceased to be commissioned from June 2017, despite a robust effort to maintain it.

CCG Locally Commissioned Services

West Essex Clinical Commissioning Group (CCG) continue to commission the palliative care box scheme, this was originally a PCT service that had been commissioned in the interim by NHS England.

Thurrock and Basildon and Brentwood CCGs have commissioned a warfarin PGD service from a limited number of pharmacies where GPs have returned Warfarin contracts. The CCG worked closely with Essex LPC on the development and implementation of the service, and a small stakeholder group continues to monitor the impact. This is an interim arrangement pending a procurement, hence a small number of participating sites, however in some locations this may have impacted on prescription numbers at non-participating pharmacies, this will need to be mitigated against in the substantive service anticipated in 2018/19.

North East Essex CCG commissioned a winter pressures COPD service, which is likely to become an established service in 2018/9. Initially floated as a "quick win" using additional winter pressures money, the service has objectively and robustly demonstrated the value that community pharmacy can add to the support and management of patients with long term conditions.



Essentially what has been commissioned is a PGD service for COPD "rescue packs", with the focus on planning and preparation while patients are well: however, the service is designed to incorporate an offer of many more commissioned services that support respiratory patients, and an audit of these is built in. Commissioners have been impressed with early results, and further development of the service is taking place summer 2018 in preparation for next winter.

It is encouraging that CCGs are at last beginning to commission some services from community pharmacies: The challenge is now to ensure that contractors deliver to expectations. However, there are still some resource-saving services that CCGs are expecting pharmacies to deliver free of charge, such as the Back-Pain project in Witham. As a representative committee we need to challenge these expectations, and to work with contractors who feel pressurised into delivering services at a loss.

COMMISSIONED SERVICES

Public Health Services

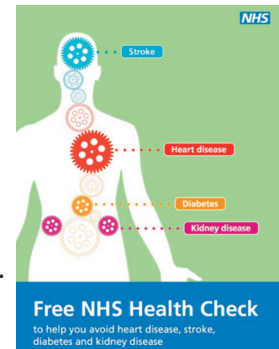


Essex County Council Services

NHS Healthchecks

Anglia Community Enterprise (ACE) is the lead provider for NHS Healthchecks. Eligibility is based on a local needs assessment, considering cohort size and other providers in each locality.

Currently there are 73 pharmacies commissioned to provide NHS healthchecks (of whom 44 are active) and in 2017/8 these delivered a total of 1410 checks.



Sexual Health Services

The lead provider for the integrated sexual health service is Provide, who commission pharmacy services through a contractual arrangement with Healthy Living Partnership Ltd. There were 106 pharmacies contracted to provide sexual health services.

The service specification includes emergency hormonal contraception (EHC), Chlamydia screening and treatment and condom supply as part of a C-card scheme. The year has seen limited supplies of Chlamydia screening kits available to contractors, and the eC-card has been under development, so in effect it has been an EHC service.

51 of the 106 contracted pharmacies provided services during 2017/8, however the service is demand-led and activity targets are not therefore appropriate.

Substance Misuse Services (Supervised Consumption, Needle Exchange)

Substance Misuse Services are now commissioned through North Essex Partnership Foundation Trust (NEPFT) and needle exchange services from Open Road. These are based on a needs assessment. Currently there are 163 pharmacies commissioned to provide substance misuse services, however we do not have any information on activity levels, and 42 pharmacies providing needle exchange services, of whom 8 provided pick-and-mix services.



We would like to see further developments in this area, for example support for those injecting performance and image-enhancing drugs and blood borne virus screening and immunisation.

COMMISSIONED SERVICES

Stop Smoking Services



The lead provider for stop smoking services is Provide, who commission pharmacy services through a contractual arrangement with Healthy Living Partnership Ltd.

Although demand for stop smoking services has reduced considerably in the last 10 years the Essex community pharmacy service has increased activity on 2016/7, helping 1042 people to stop smoking in 2017/8 (up from c800 2016/7)

This has been achieved through targeted training and development, support with data management, some promotional activity and an incentive scheme.

177 pharmacies are contracted to deliver stop smoking services, of whom 125 have actively helped smokers to quit.



NHS Healthchecks

Thurrock Council did not commission NHS Healthchecks from community pharmacies in 2017/8

Sexual Health Services

Thurrock Council directly commissioned a Sexual Health service from community pharmacies which includes emergency contraception and Chlamydia screening and treatment during 2017/8. From April 2018 the service will be managed as an extension to the Essex county council service, i.e. Provide as lead provider, and pharmacies sub-contracted through Healthy Living Partnership Ltd.



Substance Misuse Services (Supervised Consumption, Needle Exchange)

Since April 2017 these services have been managed by SSSFT (inclusion) under a three to five-year contract, which should provide some stability for pharmacies. Inclusion have engaged actively with Essex LPC at the changeover to ensure that pharmacies providing services were aware of the change, and a few co-hosted training and update events have taken place. There are 13 pharmacies providing supervised consumption services, and 8 needle exchange pharmacies.

Stop Smoking Services

At the start of 2017/8 Thurrock council commissioned Quit51 as lead provider for stop smoking and healthy lifestyles services. The service specification offered required additional training and certification for advisers, additional CO monitoring and reporting, providing the service over a longer timeframe and proposed a lower rate of remuneration than the previous offer.

Essex LPC worked with contractors and Quit51 to achieve a more acceptable service but this was not achieved. In November 2017 Thurrock Council took the service back "in house" however the proposed contract did not change significantly and Essex LPC did not recommend the service to contractors

COMMISSIONED SERVICES

Occupational Health flu vaccination service.

Thurrock Council HR department commissioned an occupational flu service through Healthy Living Partnership, providing workplace vaccination to any council staff member who requested it, at the civic offices and the Oliver Close depot. Both Essex LPC and the two contractors involved were praised for the responsiveness to the request and the professionalism of the pharmacists administering vaccines. Some lessons were learnt, however it is anticipated that the service will be commissioned again in 2018/19

Southend-on-Sea Council Services

NHS Healthchecks

Southend-on-Sea Council did not commission NHS Healthchecks from community pharmacies in 2016/17



Sexual Health Services

Southend-on-Sea Council commissions sexual health services through a lead provider, EPUT, however activity remains low compared to other local authorities. There is currently only one pharmacy commissioned.

Substance Misuse Services (Supervised Consumption, Needle Exchange)

Southend-on-Sea council continued to commission substance misuse services directly from pharmacy contractors in 2017/18, however the service will move to a lead provider model with Lloyds from April 2018.

Stop Smoking Services

Southend-on-Sea directly commissions a Stop Smoking service from community pharmacies. This service continues to offer the most favourable terms to community pharmacies in the Essex LPC area. Currently there are 27 pharmacies commissioned to provide the service, of whom 25 have shown some activity during 2017/18. gland Local Enhanced Services

EVENTS ARRANGED FOR CONTRACTORS

Events Arranged for Contractors April 2017 – March 2018

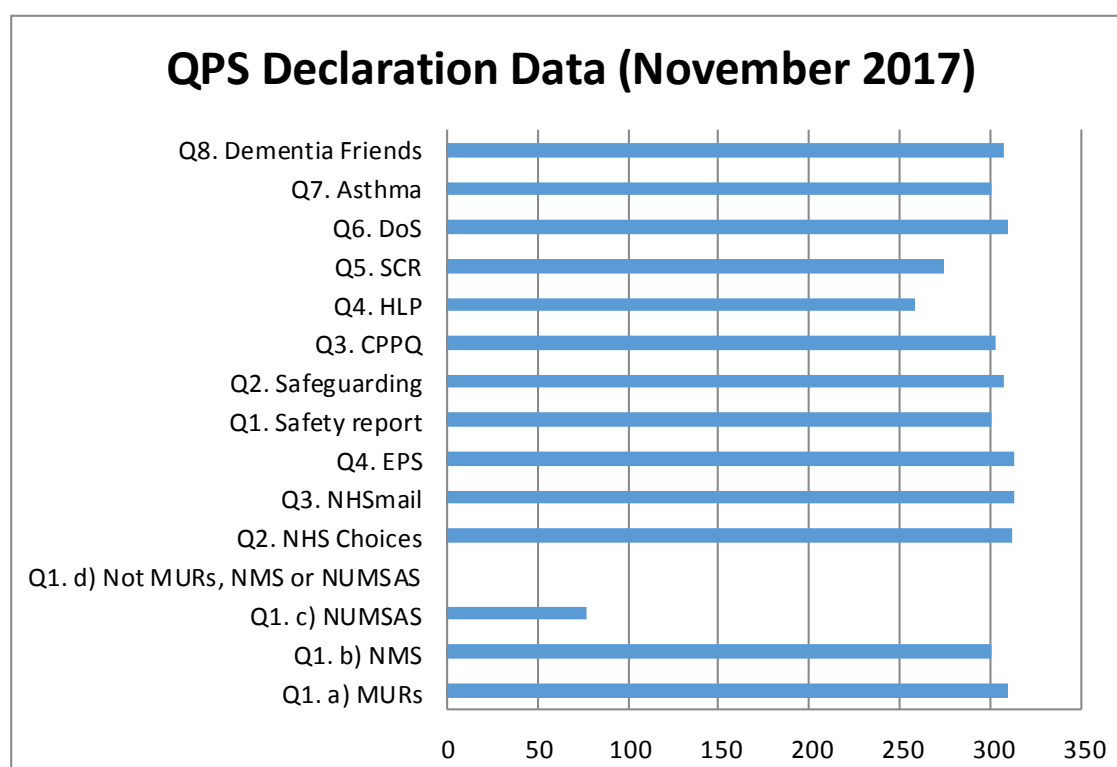
| | |
|---|---|
| North East Essex | 27 th April 2017 |
| South East Essex | 9 th May 2017 |
| South West Essex | 10 th May 2017 |
| Mid Essex | 11 th May 2017 |
| Healthy Living Pharmacy Leadership Training | 23 rd and 20 th May 2017 |
| Healthy Living Pharmacy Leadership Training | 1 st and 8 th June 2017 |
| Thurrock Hypertension Training | 5 th June 2017 |
| North East Essex | 21 st June 2017 |
| South East Essex | 22 nd June 2017 |
| West Essex | 29 th June 2017 |
| Mid Essex | 5 th July 2017 |
| North East Essex | 11 th July 2017 |
| Essex LPC Annual Conference | 20 th September 2017 |
| Thurrock Area Meeting | 26 th September 2017 |
| Healthy Living Pharmacy Leadership Training | 1 st October 2017 |
| Healthy Living Pharmacy Leadership Training | 3 rd and 10 th October 2017 |
| Healthy Living Pharmacy Leadership Training | 5 th and 12 th October 2017 |
| Mid Essex | 10 th October 2017 |
| South East Essex | 2 nd November 2017 |
| North East Essex | 8 th November 2017 |
| South West Essex | 9 th November 2017 |
| West Essex | 29 th November 2017 |
| Contractor Developmental Event | 30 th January 2018 |
| Mid Essex | 7 th February 2018 |
| Talk Cancer Event in South West Essex | 8 th February 2018 |
| North East Essex Respiratory | 13 th February 2018 |
| South West Essex | 21 st February 2018 |
| West Essex | 21 st February 2018 |
| South East Essex | 20 th March 2018 |

EVENT SUMMARY

| | |
|------------------------------|---|
| Forum Meetings (18 in total) | (4 in NE, Mid and SE, 3 in SW and West Essex). Each meeting numbers of attendees can vary, usually between 20-25 people attendees. |
| LPC Annual Conference | Mike Dent attended from PSNC together with SecurMed who discussed the Falsified Medication Directive. A series of workshops that attendees participated in included, Incident investigating and reporting; Declaration of Competence; Healthy Living Pharmacy Self-Assessment; Staff Wellbeing, these were to assist in the preparation of the 2nd Quality Payment Scheme review date for November 2017. Over 80 attended the Conference. |
| Contractor Development | “Making it Happen”. Consisted of 3 Workshops; Maximise Income Minimise Loss presented by Liam Stapleton, an Independent Pharmacy Consultant; Sharing Information with your Customers by Nicola Naylor from the Patient Information Forum and Business Models for Service Delivery by Ash Pandya. Approximately 70 people attended this event. |
| Healthy Living Pharmacy | Essex LPC secured funding from the HEE that was put towards Leadership training. Sessions took place during May and October 2017 facilitated by Colchester Institute and a whole day event was facilitated by the NPA. |
| Essex LPC Meetings | 6 meetings have taken place with Committee Members. We have encouraged Stakeholders to attend the Public Meetings and to be actively involved with taking the Essex LPC Strategy forward. |

QUALITY PAYMENT SCHEME

The Quality Payment Scheme (QPS) was introduced in the contractual year 2017/8. To participate in the scheme pharmacies had to meet certain gateway criteria, and then to demonstrate quality standards across a range of domains at either one or two points in the year. Individual pharmacy achievements under the scheme have been published by NHSBSA. In Essex 313 out of 339 pharmacies claimed one or more of the criteria, representing 92% of pharmacies. Following validation, however, it was found that two of these did not meet all the gateway criteria and so 311 pharmacies received some payments under the scheme.



FINANCIAL STATEMENTS

Unaudited Financial Statements for the Year Ended 31 March 2018

for

Essex LPC

Essex LPC

Income and Expenditure Account for the Year Ended 31 March 2018

| | 2018 | | 2017 | |
|----------------------------------|--------------|-----------------|--------------|-----------------|
| | £ | £ | £ | £ |
| Income | | | | |
| Levy receipts | 327,595 | | 337,323 | |
| Sponsorship | 13,623 | | 2,624 | |
| Deposit account interest | <u>51</u> | | <u>83</u> | |
| | | 341,269 | | 340,030 |
| Expenditure | | | | |
| PSNC expenses (including levy) | 99,859 | | 100,103 | |
| Levy for potential legal action | - | | 34,883 | |
| Rent and rates | 1,127 | | 1,539 | |
| Insurance | 966 | | 858 | |
| Utilities | 1,085 | | 1,086 | |
| Wages and social security | 157,511 | | 156,850 | |
| Pensions | 859 | | - | |
| Locum fees | - | | 180 | |
| Newsletters and printing | 1,462 | | 894 | |
| Administration expenses | 7,454 | | 8,359 | |
| Office supplies | 3,006 | | 2,836 | |
| Capital expenditure | 110 | | 721 | |
| Travel | 7,206 | | 5,097 | |
| Room hire | 5,049 | | 4,653 | |
| Miscellaneous | 2,729 | | 2,821 | |
| Attendance fees | 34,460 | | 37,962 | |
| Catering | 13,273 | | 18,154 | |
| Training | 10,345 | | - | |
| Prior year tax charge adjustment | - | | (86) | |
| Tax charge | 10 | | 17 | |
| Audit and accountancy fees | 4,500 | | 3,360 | |
| Bank charges | 168 | | 151 | |
| Depreciation | <u>1,732</u> | | <u>1,732</u> | |
| | | <u>352,911</u> | | <u>366,503</u> |
| DEFICIT | | <u>(11,642)</u> | | <u>(26,473)</u> |

FINANCIAL STATEMENTS

Essex LPC

Balance Sheet 31 March 2018

| | Notes | 2018 £ | £ | 2017 £ | £ |
|-----------------------------|-------|----------------|-----------------|----------------|-----------------|
| FIXED ASSETS | | | | | |
| Tangible assets | 2 | | 81,825 | | 83,557 |
| CURRENT ASSETS | | | | | |
| Other debtors | | - | | 5,693 | |
| Prepayments | | 420 | | 600 | |
| Barclays bank accounts | | 9,807 | | 9,802 | |
| Natwest bank accounts | | <u>200,492</u> | | <u>201,138</u> | |
| | | <u>210,719</u> | | <u>217,233</u> | |
| CURRENT LIABILITIES | | | | | |
| Taxation | | 10 | | 17 | |
| Pension | | 128 | | 125 | |
| Accruals | | <u>7,110</u> | | <u>3,710</u> | |
| | | <u>7,248</u> | | <u>3,852</u> | |
| | | | <u>203,471</u> | | <u>213,381</u> |
| NET ASSETS | | | <u>285,296</u> | | <u>296,938</u> |
| FINANCED BY | | | | | |
| ACCUMULATED RESERVES | | | | | |
| Brought forward | | | 296,938 | | 323,411 |
| Deficit | | | <u>(11,642)</u> | | <u>(26,473)</u> |
| | | | <u>285,296</u> | | <u>296,938</u> |

Notes to the Financial Statements for the Year Ended 31 March 2018

1. ACCOUNTING POLICIES

Accounting convention

The financial statements have been prepared under the historical cost convention.

Incoming resources

Revenue is recognised in the financial statements only when it has actually been received.

Expenditure

Expenses are recognised in the financial statements during the period to which they relate.

Tangible fixed assets

Depreciation is provided at the following annual rates in order to write off each asset over its estimated useful life.

Long leasehold - Straight line over 50 years



FINANCIAL STATEMENTS

Unaudited Financial Statements for the Year Ended 31 March 2018

for

Essex LPC

2. TANGIBLE FIXED ASSETS

| | Long leasehold £ |
|--------------------------------------|------------------------|
| COST | |
| At 1 April 2017 and 31 March 2018 | <u>86,588</u> |
| DEPRECIATION | |
| At 1 April 2017 | 3,031 |
| Charge for year | <u>1,732</u> |
| At 31 March 2018 | <u>4,763</u> |
| NET BOOK VALUE | |
| At 31 March 2018 | <u><u>81,825</u></u> |
| At 31 March 2017 | <u><u>83,557</u></u> |

3. RESERVES

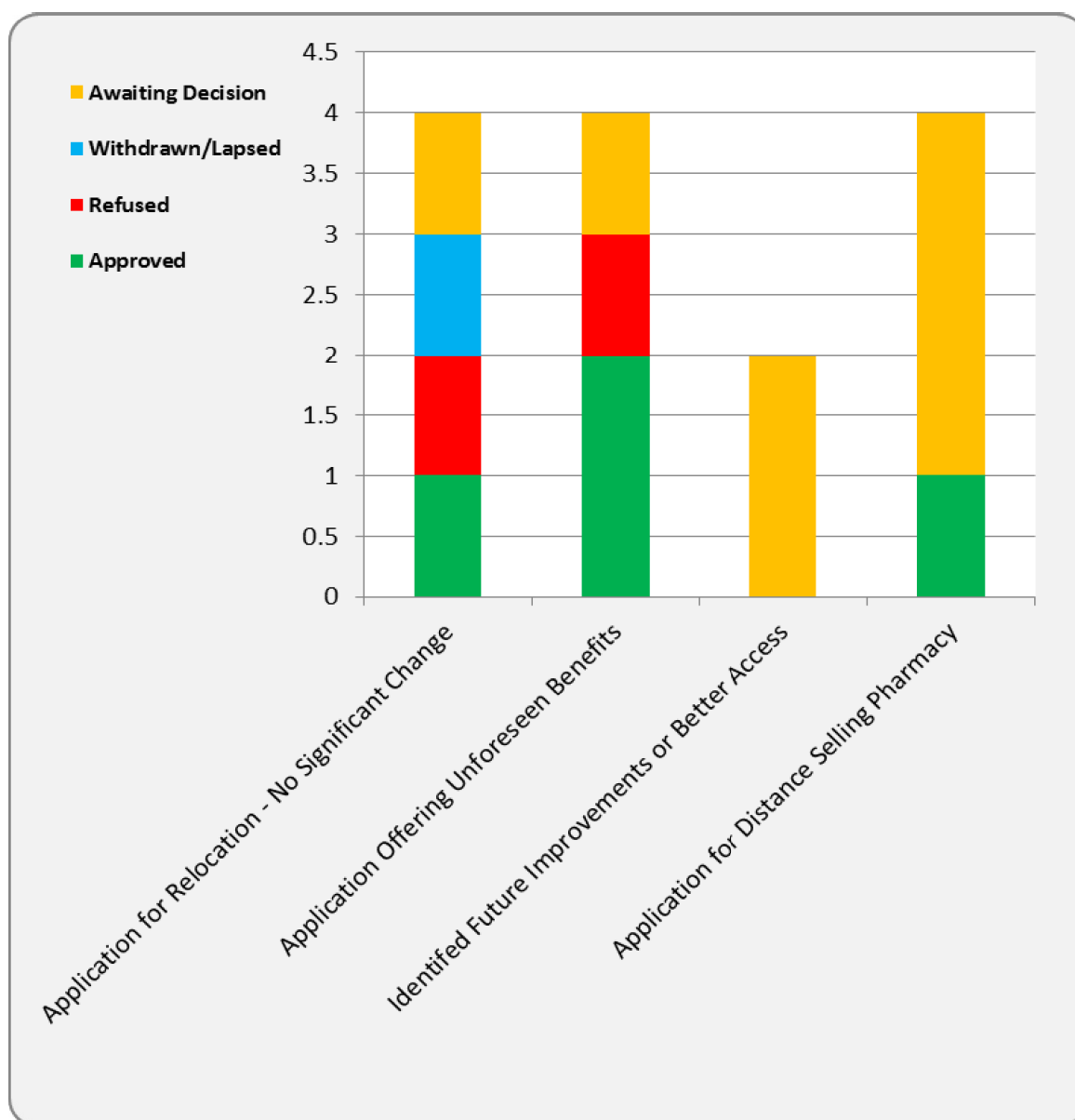
| | Other reserves £ |
|----------------------|------------------------|
| At 1 April 2017 | 296,938 |
| Deficit for the year | <u>(11,642)</u> |
| At 31 March 2018 | <u><u>285,296</u></u> |

4. LEVY FOR POTENTIAL LEGAL ACTION

During the previous year the LPC contributed £34,883 towards a fund to meet the legal costs of a potential claim against the NHS in relation to their proposed changes to funding

PHARMACY APPLICATIONS

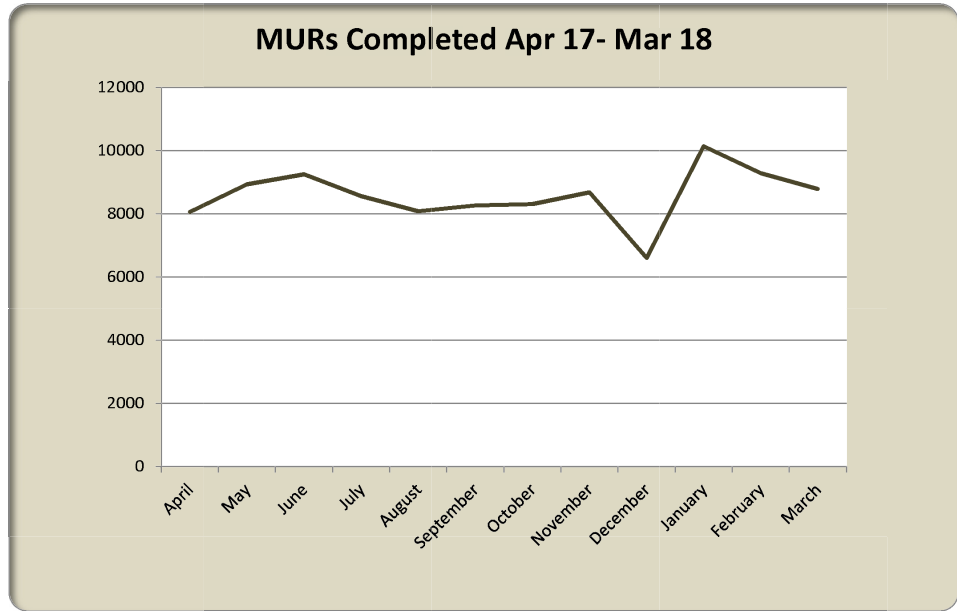
| Application | Approved | Refused | Withdrawn/ Lapsed | Awaiting Decision | Applications Received |
|--|----------|----------|----------------------|----------------------|--------------------------|
| Application for Relocation - No Significant Change | 1 | 1 | 1 | 1 | 4 |
| Application Offering Unforeseen Benefits Identified Future Improvements or Better Access | 2 | 1 | | 1 | 4 |
| Application for Distance Selling Pharmacy | | | | 2 | 2 |
| | 1 | | | 3 | 4 |
| | 4 | 2 | 1 | 7 | 14 |



MUR & NMS DATA

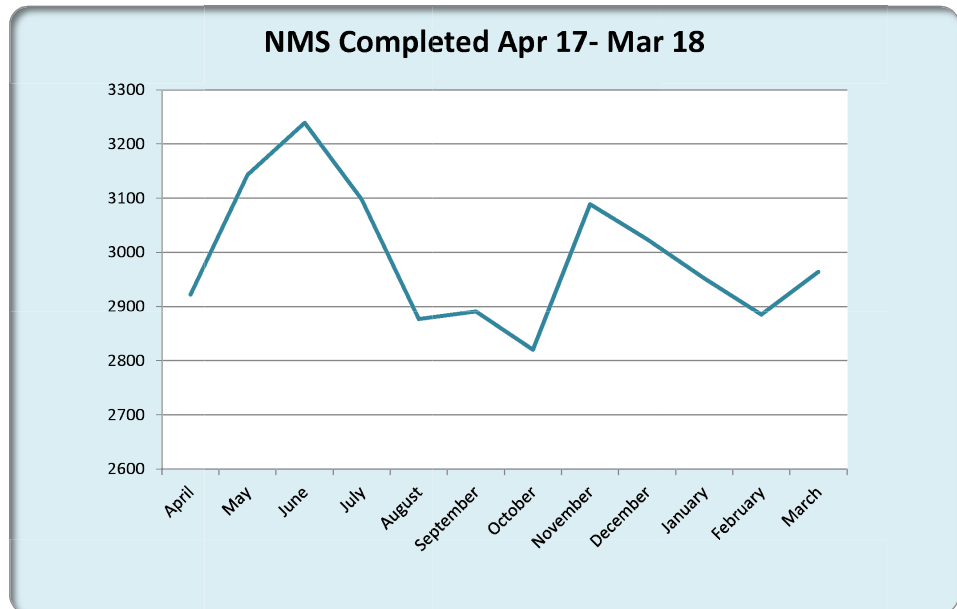
April 2017 - Mar 2018

| | 2017/18 |
|----------------------|---------|
| April | 8054 |
| May | 8928 |
| June | 9248 |
| July | 8554 |
| August | 8079 |
| September | 8263 |
| October | 8303 |
| November | 8679 |
| December | 6598 |
| January | 10133 |
| February | 9285 |
| March | 8781 |
| Total MURs completed | 102905 |
| MURs Available | 135200 |
| Total Pharmacies | 338 |
| % MUR Takeup | 76.11 |



April 2017 - Mar 2018

| | 2017/18 |
|---------------------|---------|
| April | 2922 |
| May | 3143 |
| June | 3239 |
| July | 3098 |
| August | 2877 |
| September | 2891 |
| October | 2820 |
| November | 3089 |
| December | 3024 |
| January | 2952 |
| February | 2885 |
| March | 2964 |
| Total NMS completed | 35904 |



COMMITTEE MEMBER'S ATTENDANCE RECORD

LPC Members Record of Meeting Attendance 2017/18

| NAME | Elected or Appointed | Attendance Record |
|------------------|----------------------|-------------------|
| Babatunde Sokoya | Elected Independent | 6/6 |
| Bharat Patel | Elected Independent | 5/6 |
| Frank McLaughlan | CCA Appointment | 5/6 |
| Joe Hamilton | CCA Appointment | 3/6 |
| Michael Rodol | CCA Appointment | 5/6 |
| Mikey Donnachie | CCA Appointment | 4/6 |
| Nikunj Shah | Elected Independent | 6/6 |
| Penny Skellern | Elected Independent | 6/6 |
| Rajiv Sharma | Elected Independent | 6/6 |
| Sanjay Patel | CCA Appointment | 4/6 |
| Simon Moul | AIMS Appointment | 6/6 |

DECLARATION OF INTERESTS

Declaration of Interests Summary July 2017

| Name | Business Interests | Voluntary Organisations or Charities | Contracting For NHS Services |
|--|--|--------------------------------------|---|
| Joe Hamilton Updated July 2017 | Area Manager for Lloyds Pharmacy | None | None |
| Frank McLaughlan | Area Manager Lloyds Pharmacy, Essex/Suffolk | None | None |
| Simon Moul Updated Jul 2017 | Employee Day Lewis Pharmacy PLC Superintendent Pharmacist Leach and Burton Ltd | None | Day Lewis PLC |
| Mikey Donnachie | Employee of Rowlands Pharmacy | None | None |
| Ash Pandya Updated Jul 2017 | Healthy Living Partnership | None | Healthy Living Partnership |
| Bharat Patel | Partner at Elora & Yardley Pharmacy Director of Canaryford Ltd Paid NPA Board Member for expenses only Paid PSNC Member for expenses only Member of Essex LPC for expenses | PSNC, NPA and Essex LPC Member | Canaryford Ltd – Nursing Services Elora Pharmacy – NHS Services Yardley Pharmacy – NHS Services Healthy Living Partnership Ltd Chairman |
| Sanjay Patel | Employee of Boots Pharmacy | None | None |
| Ashok Pattani Updated July 2017 | The Pharmacy, Springfield – Pharmacist Partner | None | None |
| Michael Rodol | Employee of Tesco Ltd | None | None |
| Nikunj Shah | Owner of West Bergholt Pharmacy | None | West Bergholt Pharmacy |
| Rajiv Sharma | Gt Berry Pharmacy | None | Gt Berry Pharmacy |
| Penny Skellern Updated July 2017 | Employee of Maylandsea Pharmacy | None | None |
| Tunde Sokoya | Director TSGK Enterprises Ltd, trading as Easter Pharmacy | None | Director of TSGK Enterprises Ltd T/A Easter Pharmacy providing pharmaceutical services. |
| Karen Samuel-Smith | None | None | None |
| Elaine Dove-Dixon | None | None | None |
| Angela Culleton | None | None | None |

LPC MEMBER'S CONTACT DETAILS

Committee Members' Contact Details – 2017/18

| Function | Status | Name | Locality |
|-----------|--------------------------------|--------------------|---------------------------------|
| Chair | AIMp Rep. | Simon Moul | North East Essex Colchester |
| Member | Elected Contractor Rep | Babatunde Sokoya | West Essex |
| Member | Elected Contractor Rep. | Bharat Patel | South East Essex - Castle Point |
| Member | Elected CCA Rep. | Frank McLaughlan | South East Essex Southend |
| Member | Elected CCA Rep. | Joe Hamilton | West Essex |
| Member | Elected CCA Rep. | Michael Donnachie | North East Essex - Tending |
| Member | Elected CCA Rep | Michael Rodol | South West Essex |
| Member | Elected Contractor Rep. | Nikunj Shah | North East Essex - Colchester |
| Member | Elected Contractor Rep. | Penny Skellern | Mid Essex |
| Member | Elected Contractor Rep. | Rajiv Sharma | South West - Basildon |
| Member | Elected CCA Rep | Sanjay Patel | Mid Essex |
| | | | |
| Secretary | Chief Executive | Ash Pandya | Essex |
| | Contractor Development Manager | Karen Samuel-Smith | Essex |
| | Finance Manager | Ashok Pattani | Essex |



Essex Local Pharmaceutical Committee

17, Clematis Tye
Springfield,
Chelmsford,
Essex CM1 6GL

Tel: 01245 460079
Email: office@essexlpc.org.uk